



**DWAYNE
PURVIS, P.E.**

The Engineer as Craftsman

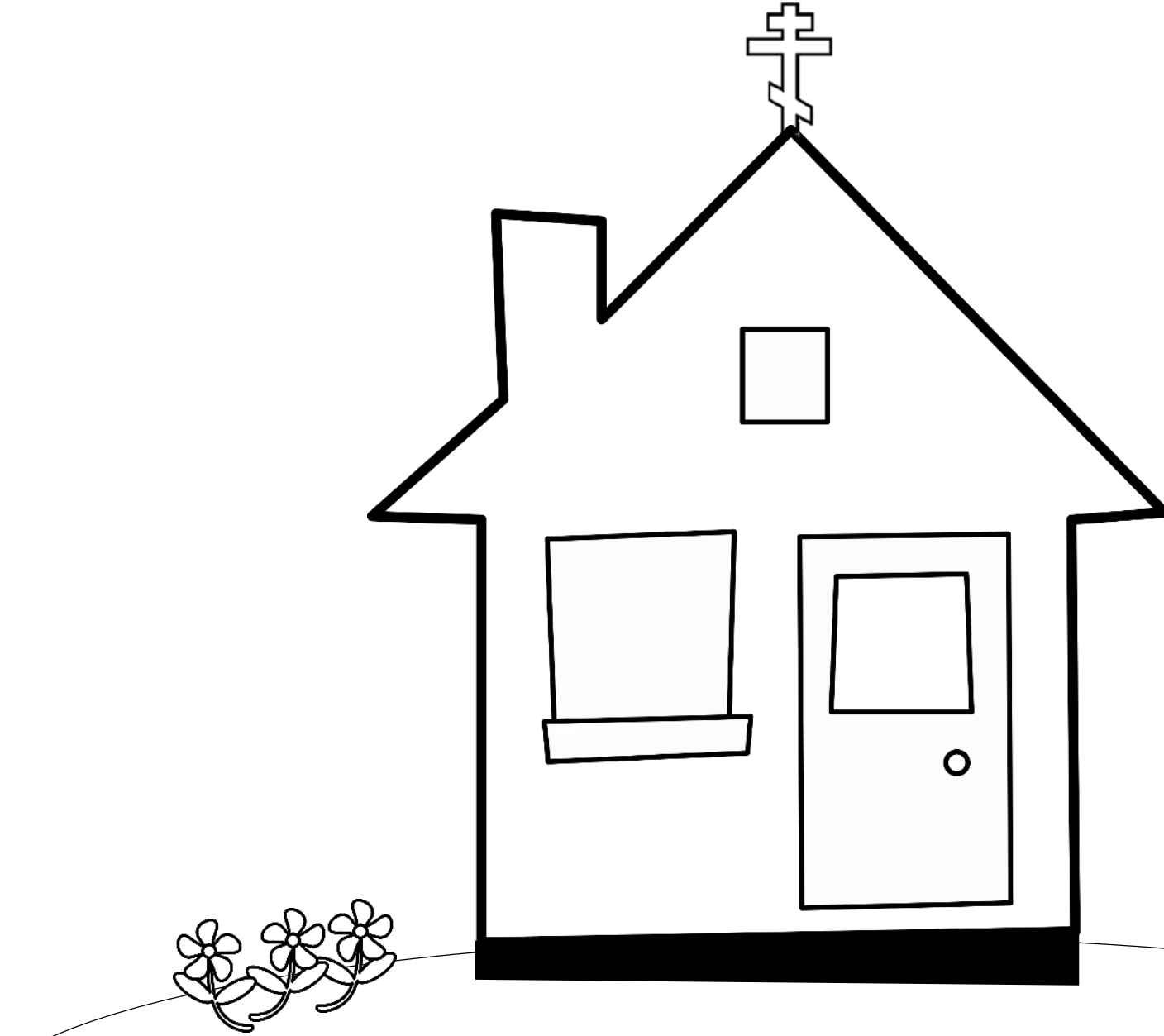
OKC Section SPEE

January 24, 2019

Engineering algorithms are merely tools



**DWAYNE
PURVIS, P.E.**



design

synthesis

analysis

accumulation & reduction

data

**DWAYNE
PURVIS, P.E.**

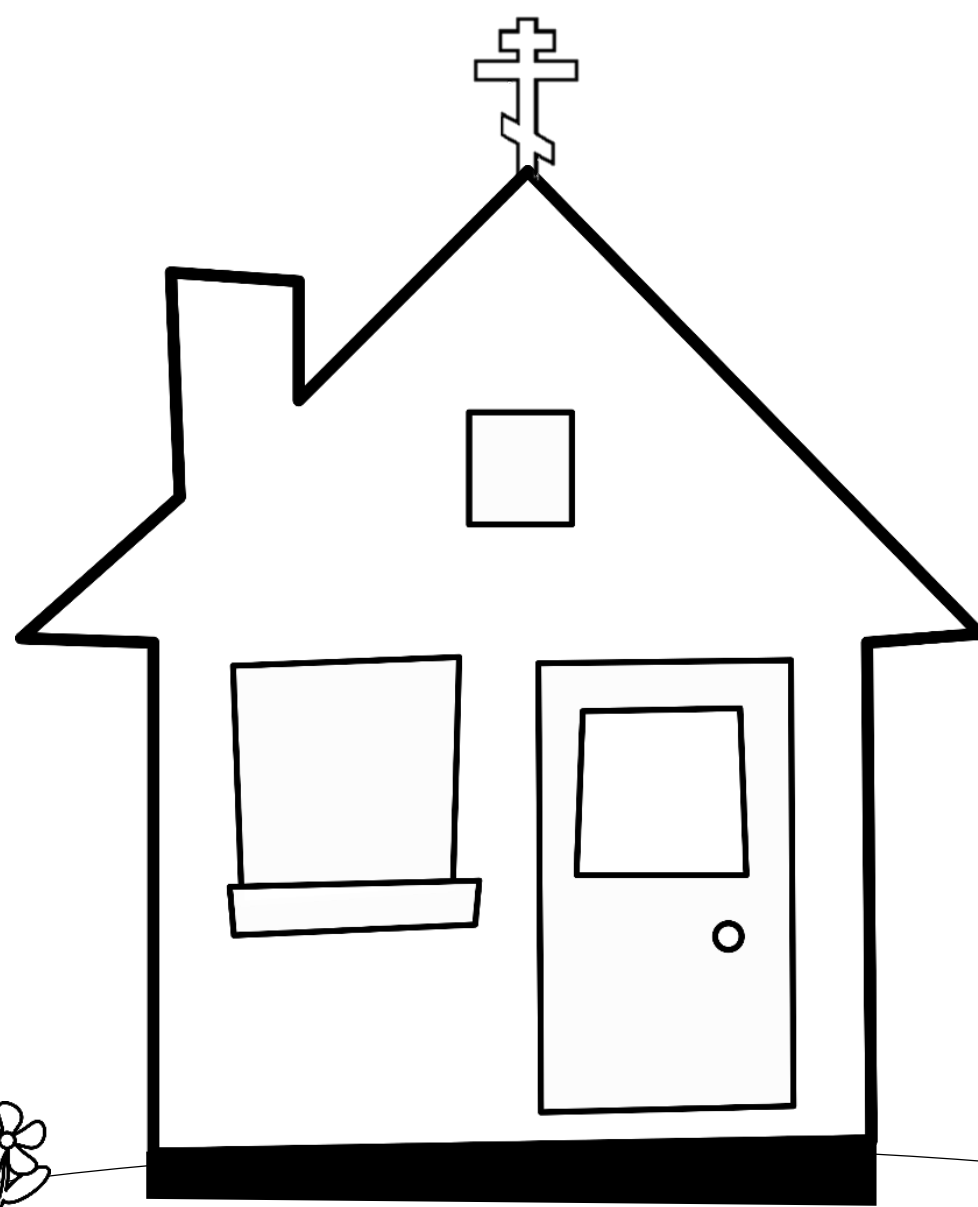
quality...

timely

reliable

for decision at hand

transferable



design

synthesis

analysis

accumulation & reduction

data

**DWAYNE
PURVIS, P.E.**

Our foundation and raw material is. . .



data

Our foundation and raw material is. . .

data



production tests, volumes

flowing pressures
build-up pressures

open hole logs
mud logs
cased hole logs

core analysis
special core analysis

reservoir fluid studies
fluid properties correlations

drilling and operations
history, configuration

contracts, operating costs,
capital costs

Public data downloads are invaluable. . .

vendors

DrillingInfo

IHS

TGS

Oseberg

Lasser

Welldatabase

regulatory agencies

what it is

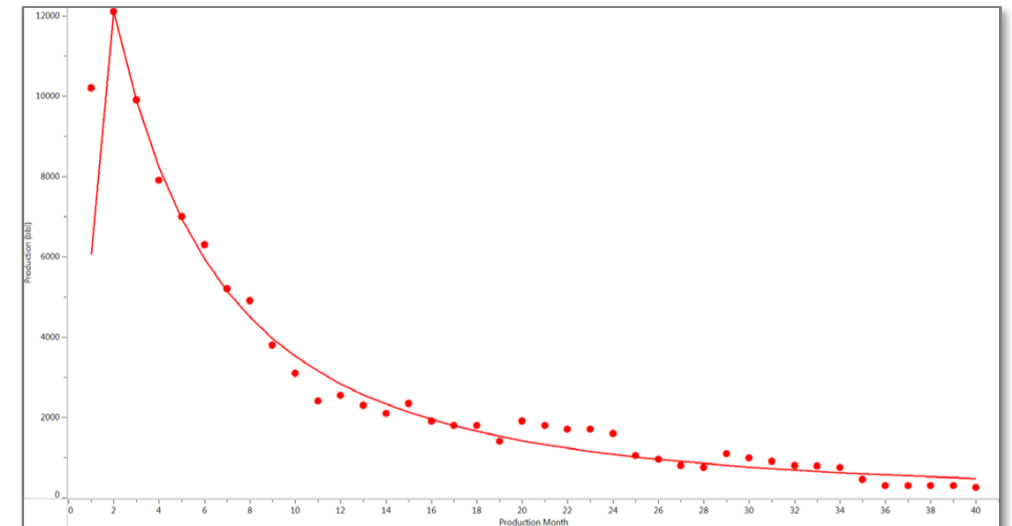
header data

monthly volumes

well test rates

what is emerging

different methods of allocation



**DWAYNE
PURVIS, P.E.**

. . .but badly needing an overhaul

what it is

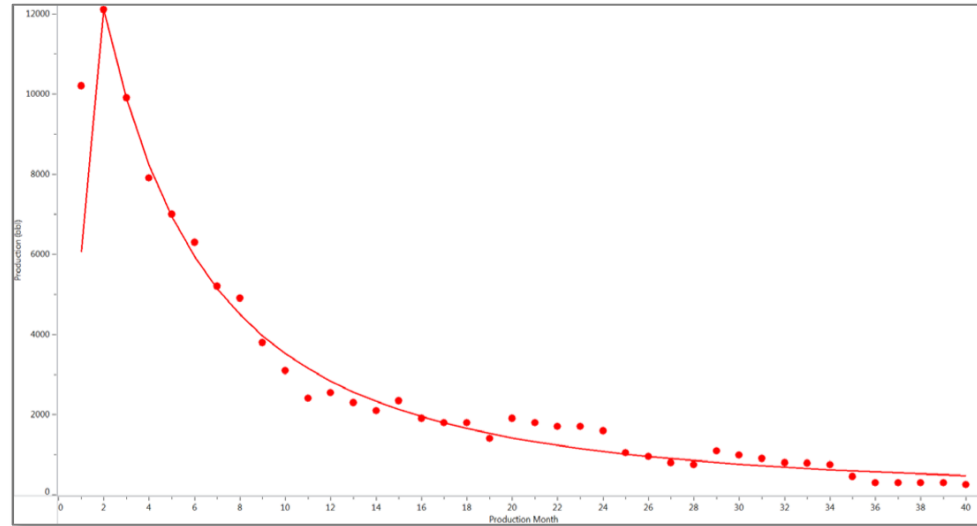
header data
monthly volumes
well test rates

what is emerging

different methods of allocation

what it should be

complete test info
commodity sales price
lease NRI
allocated & unallocated data
or data on allocation quality
perhaps LOE data from
ad valorem appraisal



Treasuries of public data extend well beyond production. . .

literature

- papers via university library
- reference volumes, monographs
- state geologic surveys

docFinder database

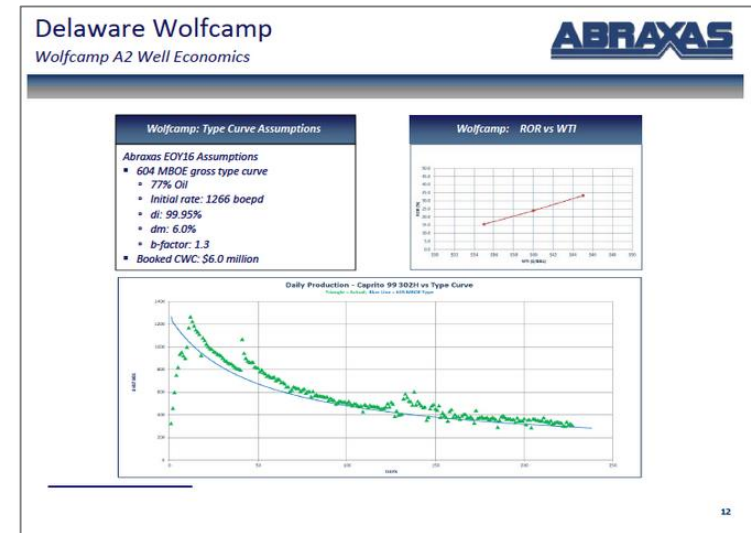
- geology, costs, recovery, etc.
- b-factor database

log libraries

- before about 1990

DI Plus LAS files

The Clark Society



PLS docFinder

Search Options New Search

19 Slides Found in 15 Documents for Quick Stats: [B-Factor Over 0 In Wolfcamp] Year 2017

View Datasheet Region: United States Play: Wolfcamp Stat: B-Factor Year: 2017 Sorted by Date in Descending Order

Slide Info		Area				Well Economics			Well Design			EUR			IP Rates						
Date	Operator	Formation	Field, Area	Basin	County, Parish, Province	D+C Cost (\$MM)	LOE (\$/boe)	F&D (\$/boe)	%IRR	Lateral (Ft)	Depth (Ft)	Frac Stages	Proppant (lbs)	MMboe	MMbo	B-Factor	Duration	Bo/d	Mct/d	Boe/d	MMcfe/d
09/26/17	Abraxas Petroleum Corp...	Wolfcamp, W...		Permian Basin...		\$6.00								0.60		1.3	30 Day				1,266
08/22/17	Abraxas Petroleum Corp...	Wolfcamp, W...		Delaware Basin...	Ward (texas)	\$6.00								0.60	0.47	1.3	30 Day				1,266
08/14/17	Rosehill Resources Inc	Wolfcamp, W...		Delaware Basin	Loving (texas)	\$6.25		60						0.69	0.51	0.9	24 Hour	700			
08/14/17	Rosehill Resources Inc	Lower Wolfca...		Delaware Basin	Loving (texas)	\$6.25		71						0.75	0.54	0.9	24 Hour	800			
07/24/17	Abraxas Petroleum Corp...	Wolfcamp, W...		Delaware Basin		\$6.00								0.60		1.3	24 Hour	974.8			1,266
06/01/17	Abraxas Petroleum Corp...	Wolfcamp, W...		Delaware Basin		\$6.00								0.60		1.3	24 Hour	974.8			1,266
05/16/17	Ryder Scott	Wolfcamp												0.34		0.99	30 Day				
05/16/17	Ryder Scott	Wolfcamp												0.61		0.99	30 Day				1,266
05/15/17	Abraxas Petroleum Corp...	Wolfcamp		Delaware Basin		\$6.00								0.60		1.3	24 Hour	974.8			1,266
04/03/17	Abraxas Petroleum Corp...	Wolfcamp		Delaware Basin		\$6.00								0.60		1.3	24 Hour	974.8			1,266
04/03/17	Lilis Energy Inc	Wolfcamp, W...		Delaware Basin		\$7.00		118	6,550		35			0.65		1.2	30 Day				2,125
02/01/17	Abraxas Petroleum Corp...	Wolfcamp, W...		Delaware Basin	Ward; Reeves	\$5.60								0.65		1.6	30 Day				1,225
01/24/17	Halcon Resources	Wolfcamp, W...		Delaware Basin	Pecos; Ward	\$7.90		110	7,500			15,000,000		0.98		*1.3	30 Day				
01/24/17	Lilis Energy Inc	Wolfcamp, W...		Delaware Basin		\$6.00		74	5,280					0.74		1.2	30 Day	1,000			
01/23/17	Abraxas Petroleum Corp...	Wolfcamp, W...		Delaware Basin		\$5.60		46						0.65		1.6	24 Hour				1,225
01/12/17	Carrizo Oil & Gas Inc	Wolfcamp, W...		Delaware Basin		\$7.00				7,000		31		1.86	0.71	*1.3	30 Day				500
01/12/17	WPX Energy	Wolfcamp, Up...		Delaware Basin	Loving; Ree...	\$5.60		55	5,280					1.10		1.5	24 Hour			645	
01/12/17	WPX Energy	Wolfcamp, Up...		Delaware Basin	Loving; Ree...	\$6.75		70	7,920					1.60		1.5	24 Hour			824	
01/12/17	WPX Energy	Wolfcamp, Up...		Delaware Basin	Loving; Ree...	\$7.90		95	10,560					2.10		1.5	24 Hour	1,060			

DWAYNE PURVIS, P.E.

...even into proprietary and laboratory data

RRC

- wellfiles online
- field rules hearings
- waterflood survey

Core Lab

- consortia studies
- relative permeability database
- core database

GeoMark Research

- PVT database
- oil geochem
- gas analyses
- water analyses
- source rock analyses
- all or subset



**DWAYNE
PURVIS, P.E.**

Some tools are better than others



**DWAYNE
PURVIS, P.E.**

Generic tools are powerful. . .



Excel

for tables
for simple & unique calculations

Spotfire

for graphs
for data analysis of any kind

Tableau

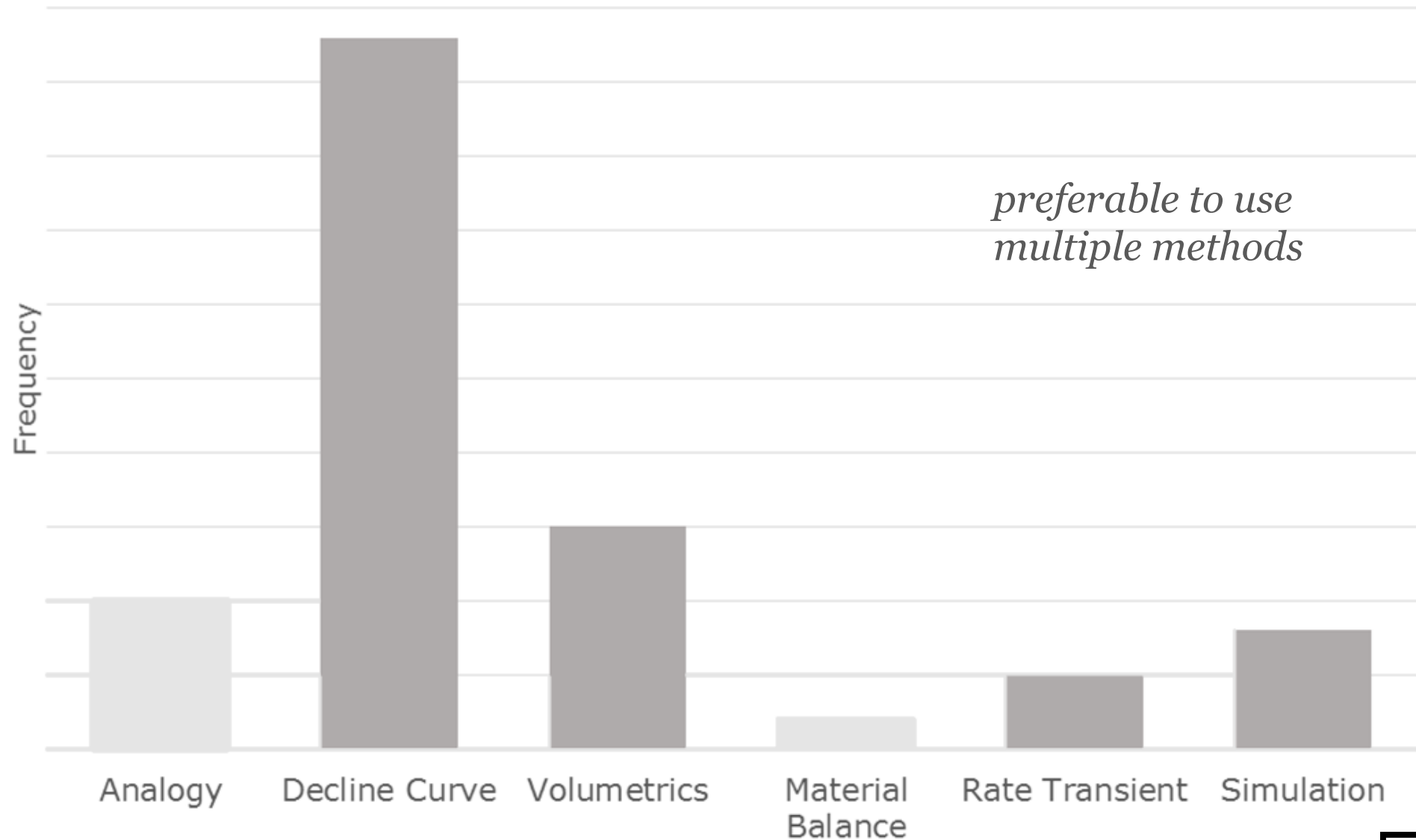
...but not universal



*When all you have is a hammer,
everything looks like a nail.*

-Abraham Maslow (paraphrase)

Few methods for determining reserves



Volumetrics, mapping and cross-sections needs step change

vendors

Petra

Transform

Geographix

NeuraSection

Surfer + Strater

ARCgis/Qgis

Petrel

RMS (Roxar)

GOCAD

ReservoirGrail

what it is

two dimensional

log images

single-user

what is emerging

three dimensional

LAS images

high resolution

Volumetrics, mapping and cross-sections needs step change

what it is

two dimensional
log images
single-user

what is emerging

three dimensional
LAS images
high resolution

what it should be

fully LAS
fully three dimensional
available to other users
manual control of contouring
save maps

Decline Curve Analysis also needs a step change

vendors

PHDwin

ARIES

Value Navigator

PEEP

OGRE

PowerTools

MOSAIC

QuickDecline

DeclinePlus

what it is

rate-time, rate-cum

two phase

deterministic

what is emerging

map interface

alternative decline models

probabilistic volume forecasting

PetroVisual

BetaZi

DI

Value Navigator

Decline Curve Analysis also needs a step change

what it should be

integrated map interface

Fetkovich (log-log)

NPI and other methods

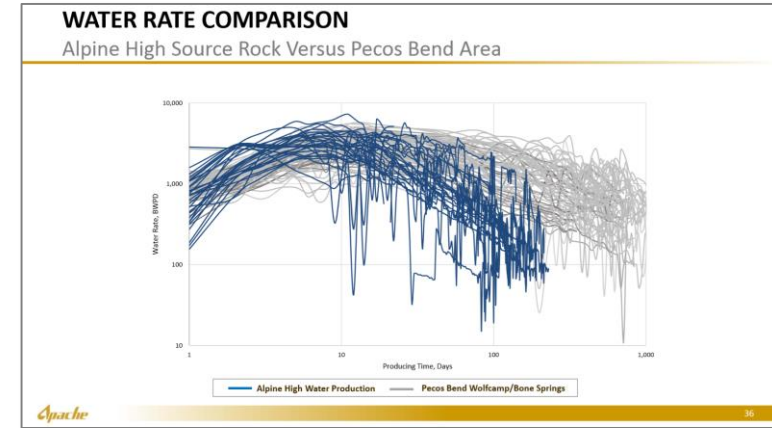
transient hyperbolic model

database and graphs of

- + all historical data

- + all inputs/outputs

NGL by default



Measure twice



Check results

Rate Transient Analysis seems static, needs more use

vendors

Harmony

Topaze

Sahara

what it is

forecast only volumes

“straight-line analysis”

“model” type curves

simulation

what is emerging

. . .

Rate Transient Analysis seems static, needs more use

what it is

forecast only volumes

“straight-line analysis”

“model” type curves

simulation

what is emerging

. . .

what it should be

integration with economics

used more often!

Simulation needs application for line engineers

vendors

Eclipse

IMEX

tNavigator

VIP

SENSOR

+ REXCEL

+ TecPlot

+ PetroStreamz

Merlin

what it is

single well or full field

mostly 1970s

+FORTRAN code

+command line flat file

what is emerging

multiprocessor, GPU and CPU

modern code

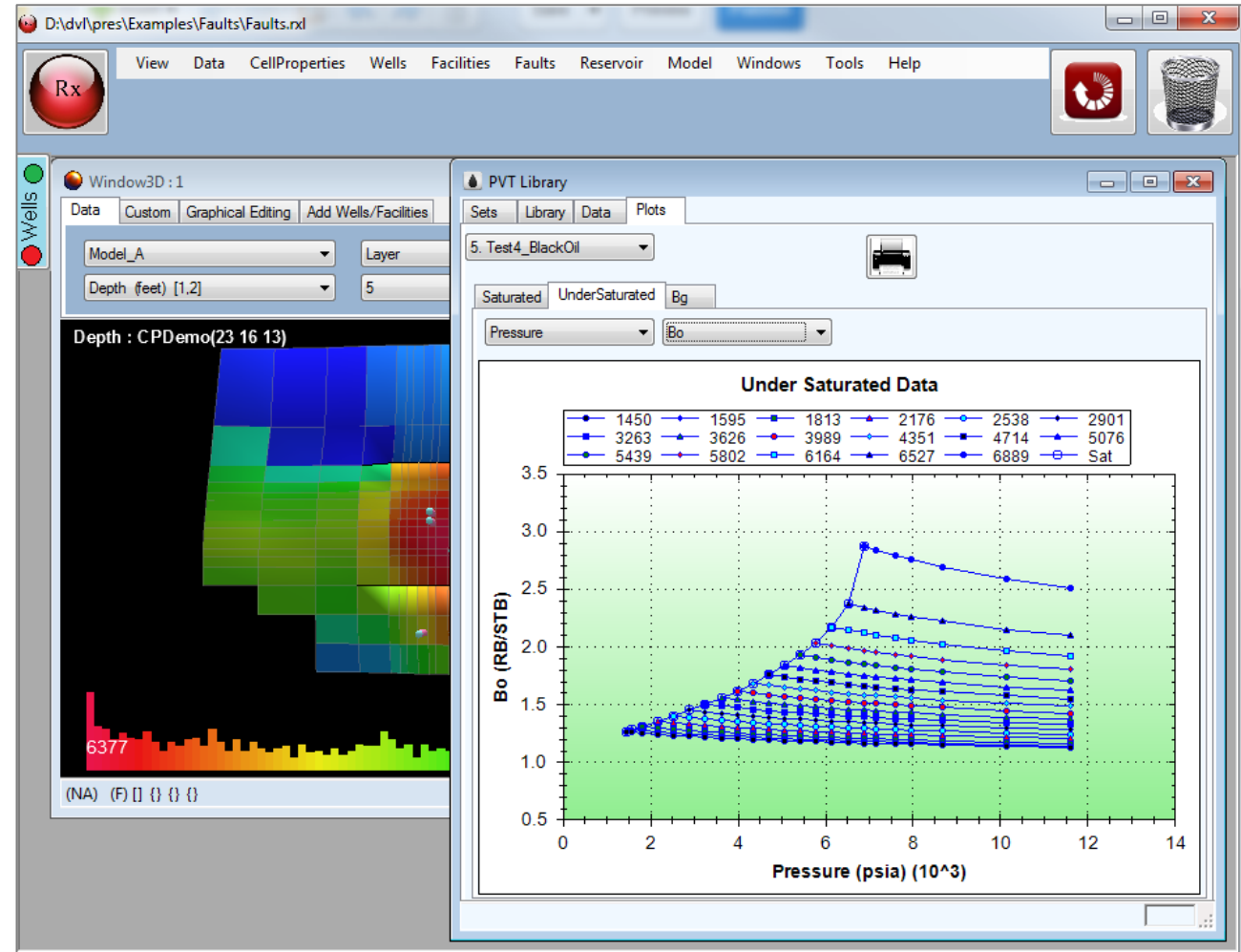
backwards compatibility

Simulation needs application for line engineers

what it should be

tool for line engineers

- + smaller and cheaper
- + modern software
- + database driven
- + extensive correlations and auto-fill
- + easy I/O
- + workflow management

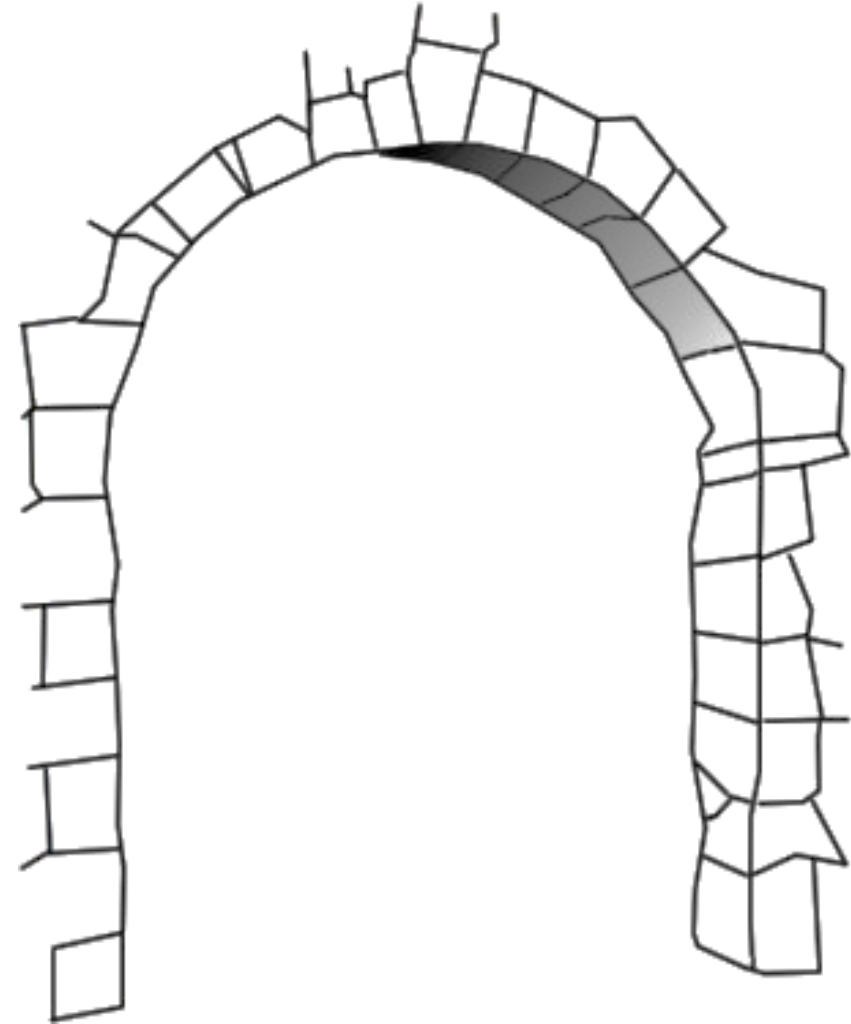
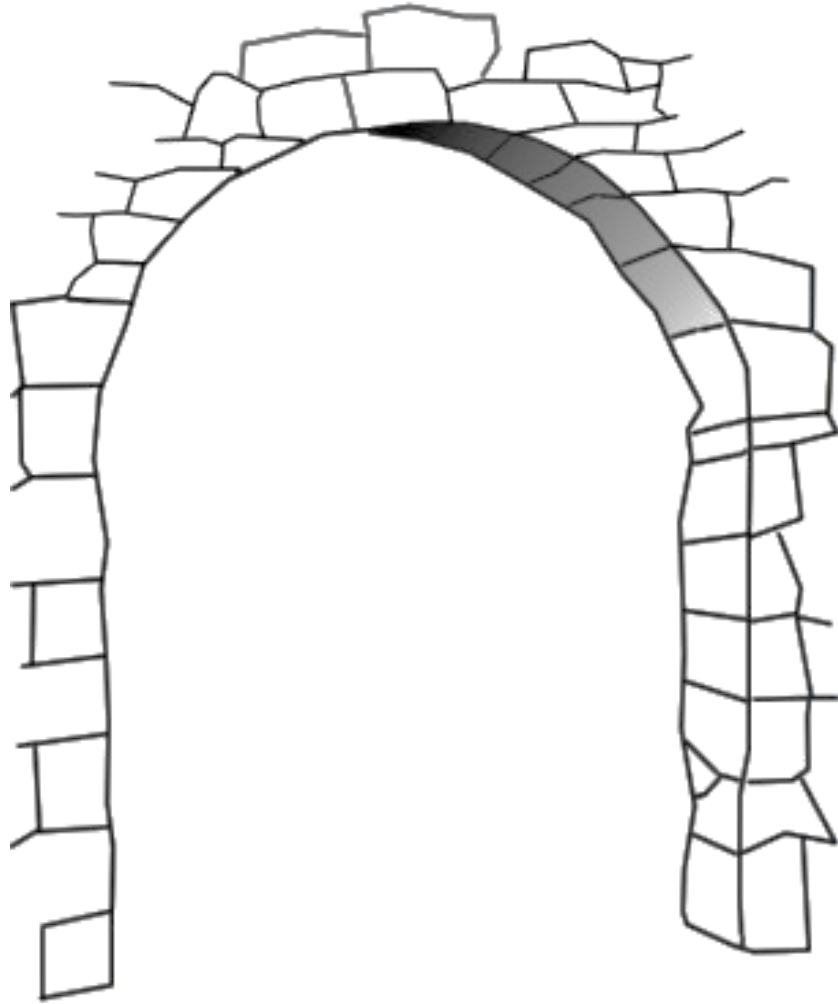


**DWAYNE
PURVIS, P.E.**



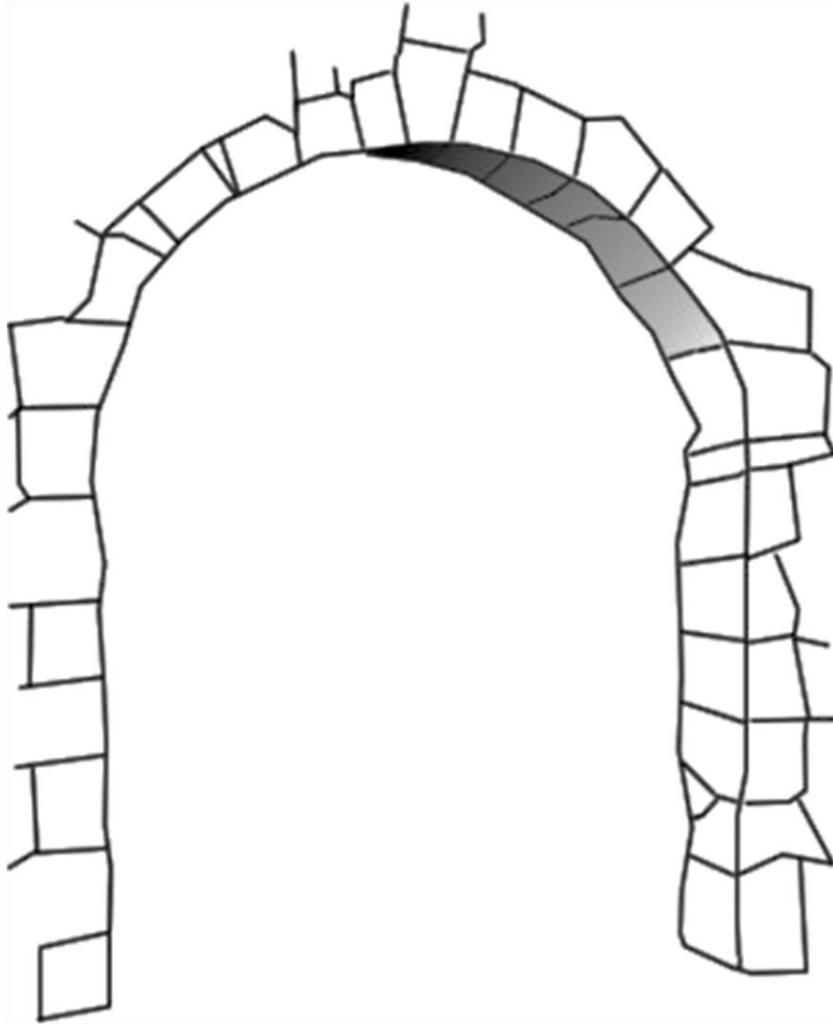
*The job is not done,
until it is cleaned up*

Reservoir engineering forms the capstone (synthesis)



**DWAYNE
PURVIS, P.E.**

Reservoir Engineering forms the capstone



*A good engineer is at least
a decent geologist.*

-Bruce Archinal

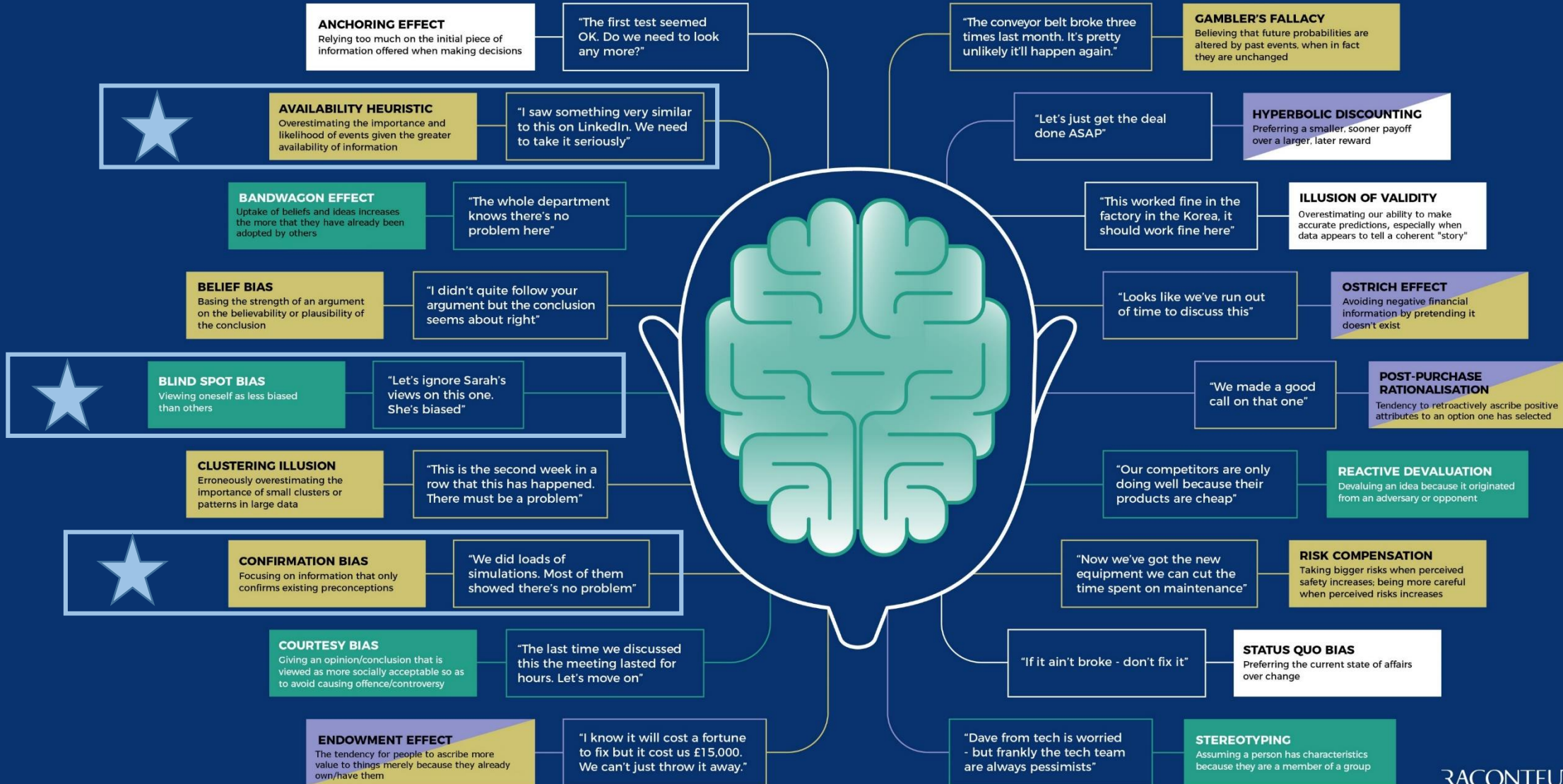
Cognitive bias

● Social ● Financial ● Failure to estimate ● Short-termism

When it comes to assessing risk, humans often fail to make rational decisions because our brains take mental shortcuts that prevent us making the correct choice. Since the 1960s behavioural scientists and psychologists have been researching these failings, and have identified and labelled dozens of them. Here are some that can cause havoc when it comes to assessing risks in business

ORIGIN

The notion of cognitive biases was first introduced by psychologists Amos Tversky and Daniel Kahneman in the early-1970s. Their research paper, 'Judgment Under Uncertainty: Heuristics and Biases', in the Science journal has provided the basis of almost all current theories of decision-making and heuristics. Professor Kahneman was awarded a Nobel Prize in 2002 after further developing the ideas and applying them to economics.



Even engineers are not rational



Intelligence will be used in the service of the neurosis.

-Sigmund Freud

Treat yourself and ideas with tactical distrust



We made a searching and fearless moral inventory of ourselves.

-Alcoholics Anonymous, Step 4

“How can we test this theory?”

- + parallel
- + perpendicular
- + possibilities

Wisdom is a matter of probabilities, not possibilities



Five measures of risk assessment

- 1. probability of success*
- 2. ratio of win to loss*
- 3. absolute win*
- 4. absolute loss*
- 5. sense of control of the outcome*

**DWAYNE
PURVIS, P.E.**

Thank You!

www.dpurvisPE.com

**DWAYNE
PURVIS, P.E.**



